



Multi-touch Touch-Screen Installation Guide

Table of Contents

Read before use	3
Safety and troubleshooting information	4
Installing Software	8
Connecting Cables	13
Calibrating the Touch Screen	14
Troubleshooting.....	16
Waste Electrical and Electronic Equipment-WEEE.....	17

Read before use



Do not connect power immediately after unpacking monitor.

Leave it for **12 hours** in warm room.

Ignoring this warning may effect in malfunction or damaged monitor.

Safety and troubleshooting information



WARNING: Use of controls, adjustments or procedures other than those specified in this documentation may result in exposure to shock, electrical hazards and/or mechanical hazards.

Read and follow these instructions when connecting and using your monitor:

Operation:

- Keep the monitor out of direct sunlight and away from stoves or any other heat source.
- Remove any object that could fall into ventilation holes or prevent proper cooling of the monitor's electronics.
- Do not block the ventilation holes on the cabinet.
- When positioning the monitor, make sure the power plug and outlet are easily accessible.
- If turning off the monitor by detaching the power cord, wait for 6 seconds before attaching the power cord for normal operation.
- Please use approved power cord provided by Videofonika all the time. If your power cord is missing, please contact with your local service center.
- Do not subject the monitor to severe vibration or high impact conditions during operation.
- Do not knock or drop the monitor during operation or transportation.

Maintenance:

- To protect your monitor from possible damage, do not put excessive pressure on the glass. When moving your monitor, grasp the frame to lift; do not lift the monitor by placing your hand or fingers on the glass.
- Unplug the monitor if you are not going to use it for an extensive period of time.
- Unplug the monitor if you need to clean it with a slightly damp cloth. The screen may be wiped with a dry cloth when the power is off. However, never use organic solvent, such as, alcohol, or ammonia-based liquids to clean your monitor.
- To avoid the risk of shock or permanent damage to the set, do not expose the monitor to dust, rain, water, or excessive moisture environment.
- If your monitor gets wet, wipe it with dry cloth as soon as possible.
- If foreign substance or water gets in your monitor, please turn the power off immediately and disconnect the power cord. Then, remove the foreign substance or water, and send it to the maintenance center.
- Do not store or use the monitor in locations exposed to heat, direct sunlight or extreme cold.
- In order to maintain the best performance of your monitor and use it for a longer lifetime, please use the monitor in a location that falls within the following temperature and humidity ranges. - Temperature: 0 ~ 40 C 32-95 F - Humidity: 20-80% RH

IMPORTANT:

Always activate a moving screen saver program when you leave your monitor unattended. Always activate a periodic screen refresh application if your monitor will display unchanging static content. Uninterrupted display of still or static images over an extended period may cause “burn in”, also known as “after-imaging” or “ghost imaging”, on your screen. "Burn-in", "after-imaging", or "ghost imaging" is a well known phenomenon in LCD panel technology. In most cases, the “burned in” or “after imaging” or “ghost imaging” will disappear gradually over a period of time after the power has been switched off.

WARNING:

Severe "burn-in" or "after-image" or "ghost image" symptoms will not disappear and cannot be repaired. The damage mentioned above is not covered under your warranty.

Service:

- The casing cover should be opened only by qualified service personnel.
- If there is any need for any document for repair or integration, please contact with your local service center.
- Do not leave your monitor in a car/trunk under direct sun light.



Consult a service technician if the monitor does not operate normally, or you are not sure what procedure to take when the operating instructions given in this manual have been followed.

Read and follow these instructions when connecting and using your computer monitor:

- Unplug the monitor if you are not going to use it for an extensive period of time.
- Unplug the monitor if you need to clean it with a slightly damp cloth. The screen may be wiped with a dry cloth when the power is off. However, never use alcohol, solvents or ammonia-based liquids.

- Consult a service technician if the monitor does not operate normally when you have followed the instructions in this manual.
- The casing cover should be opened only by qualified service personnel.
- Keep the monitor out of direct sunlight and away from stoves or any other heat source.
- Remove any object that could fall into the vents or prevent proper cooling of the monitor's electronics.
- Do not block the ventilation holes on the cabinet.
- Keep the monitor dry. To avoid electric shock, do not expose it to rain or excessive moisture.
- If turning off the monitor by detaching power cable or DC power cord, wait for 6 seconds before attach the power cable or DC power cord for normal operation.
- To avoid the risk of shock or permanent damage to the set do not expose the monitor to rain or excessive moisture.
- When positioning the monitor, make sure the power plug and outlet are easily accessible.
- **IMPORTANT:** Always activate a screen saver program during your application. If a still image in high contrast remains on the screen for an extended period of time, it may leave an "after-image" or "ghost image" on the front of the screen. This is a well-known phenomenon that is caused by the shortcomings inherent in the LCD technology. In most cases the afterimage will disappear gradually over a period of time after the power has been switched off. Be aware that the after-image symptom cannot be repaired and is not covered under warranty.

Installing Videofonika Software

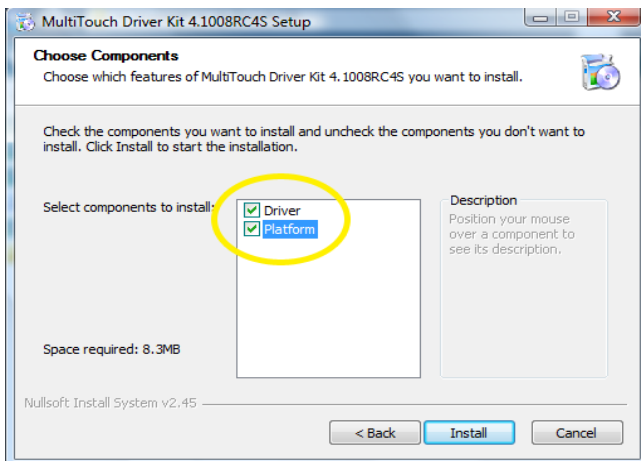
The Videofonika Multi-Touch Touch Screen require drivers.

Insert the Installation CD which containing:

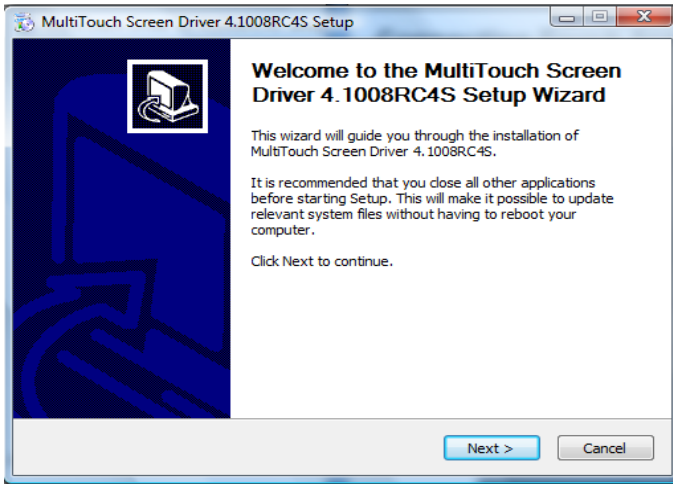
- Run Multi-Touch Platform + Driver.exe



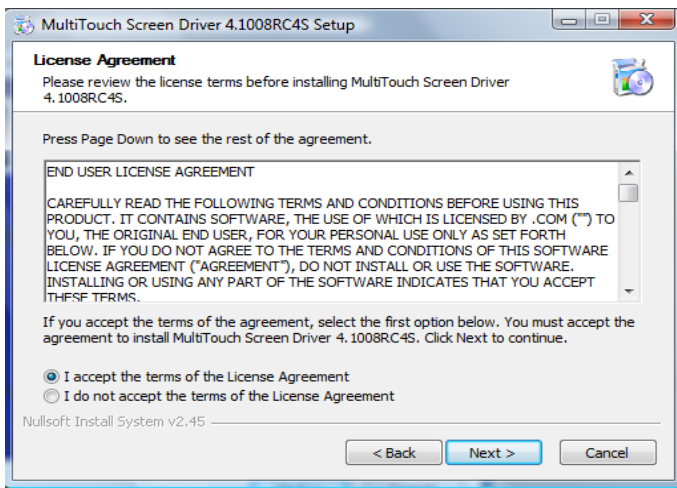
- Click Next



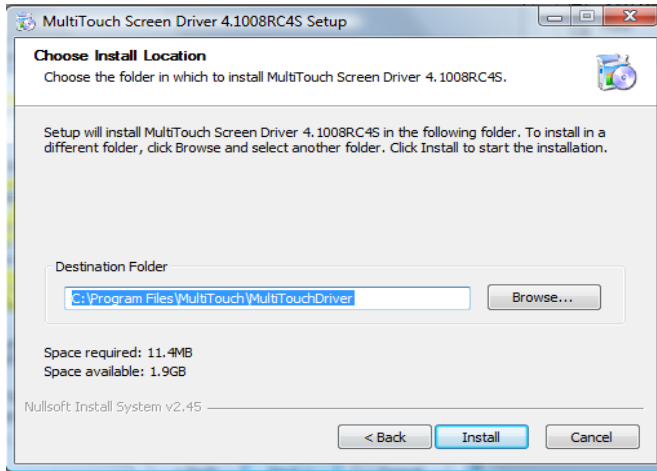
- Check Driver and Platform than click Install



- Click Next



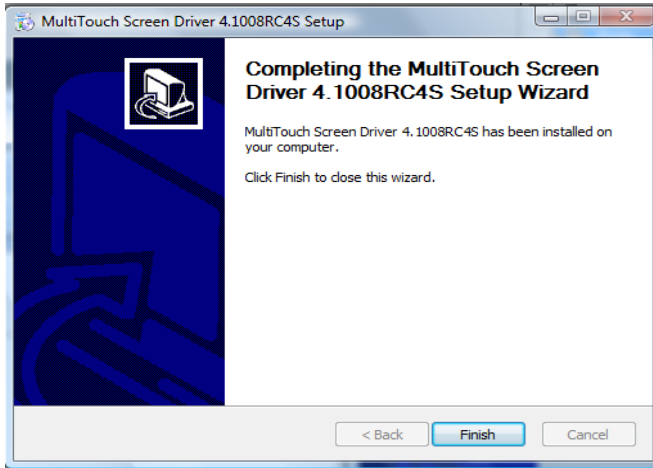
- Accept the terms of the License Agreement then click Next.



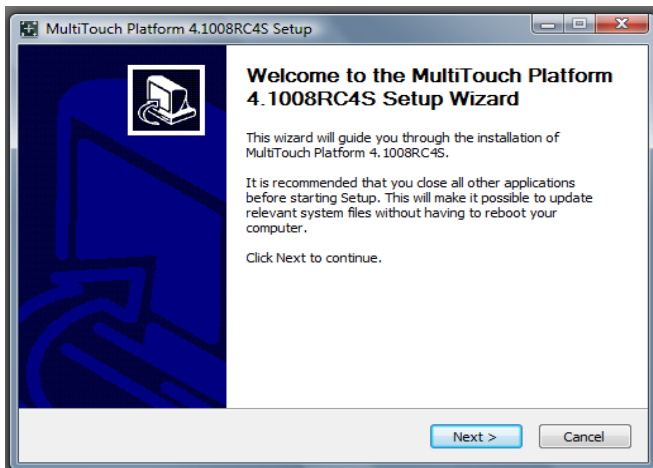
- Click Install



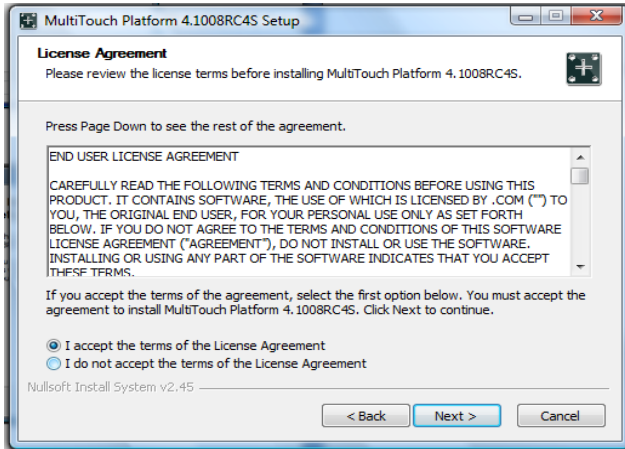
- Click Install this driver software anyway.



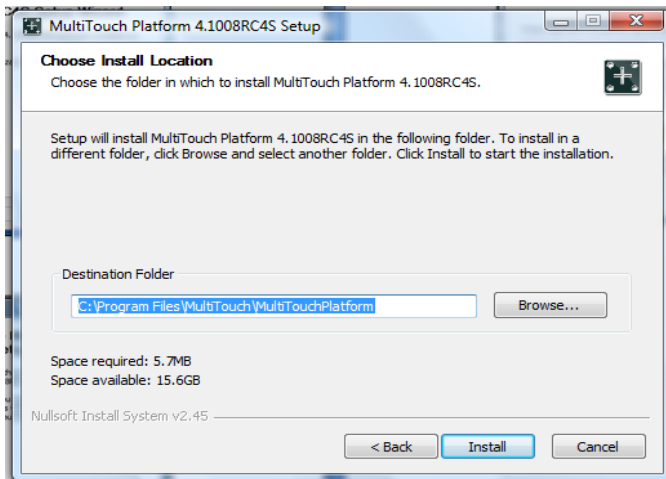
- Click Finish



- Click Next



- Click Next



- Click Install , then Finish

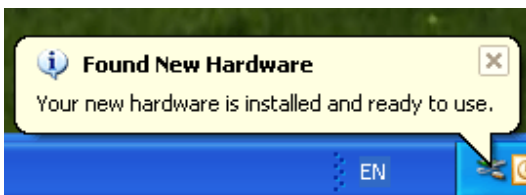
Connecting Cables

Connecting Cables and Switching On

Connect the cables and switch on the power in the following order:

1. Connect the video cable from the computer to the display screen.
2. Connect power to the display screen and switch on.
3. Connect power to the computer and switch on.
4. Plug the power adaptor into a wall socket.
5. Connect overlay power adaptor into wall socket.
5. Connect the USB cable from the touch screen to the computer.

The computer then automatically detects the USB device (the touch frame) and, after a short pause, displays a series of messages on screen.




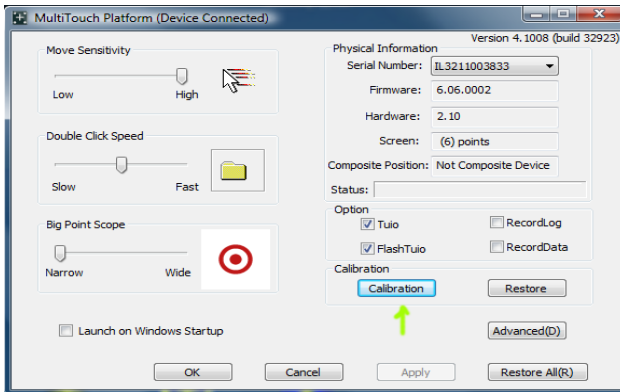
Before operating the touch screen, **you need to calibrate it.**

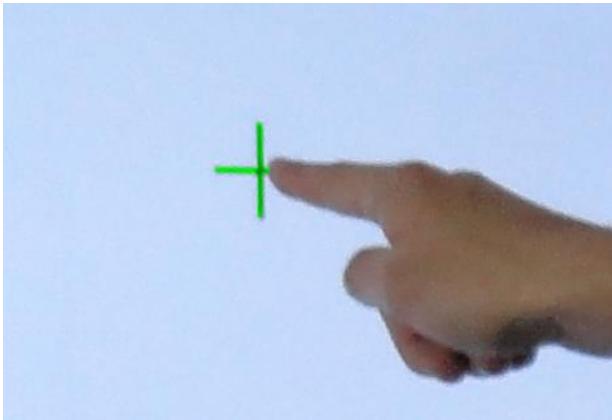
Calibrating the Touch Screen

First close any applications so that you have a clear desktop with the normal mouse pointer showing.

To enter calibration mode:

- Double click  icon then click Calibration Button





Touch small cross on the screen until it becomes green then remove your finger. If Cross is still black , remove your finger and approach it again. If it is still not working look into **Troubleshooting at page 15** .

- When removing your finger, lift it straight off the screen, making sure you don't drag it across the screen.

Troubleshooting

This section provides some diagnostic tests and solutions that you can apply in the event of a problem with the touch screen.

If the problem persists, contact your Videofonika product support provider for further advice.

Touch screen does not respond to touches

- Make sure the communications cable (USB) is connected to the computer and to the touch overlay.
- Make sure the touch screen is connected to a USB port that provides enough power for it (some peripherals, such as keyboards, include USB ports that do not provide sufficient power for certain devices). Try connecting the touch screen to a different USB port on the computer.

Cursor does not accurately follow your finger

- This can occur if the touch overlay has not been calibrated correctly. To fix the problem, re-calibrate the touch overlay—see “**Calibrating the Touch Screen**” on page 14.

Unable to calibrate the touch frame.

- If you have a problem with calibrating the touch frame, contact your Videofonika support provider for assistance.

The cursor moves erratically

- Make sure there is nothing blocking the LEDs of the touch screen. Clean the glass and edges of the screen.

Waste Electrical and Electronic Equipment-WEEE

Attention users in European Union private households



This marking on the product or on its packaging illustrates that, under European Directive 2002/96/EG governing used electrical and electronic appliances, this product may not be disposed of with normal household waste. You are responsible for disposal of this equipment through a designated waste electrical and electronic equipment collection. To determine the locations for dropping off such waste electrical and electronic, contact your local government office, the waste disposal organization that serves your household or the store at which you purchased the product.

Attention users in United States:

Like all LCD products, this set contains a lamp with Mercury. Please dispose of according to all Local, State and Federal Laws. For the disposal or recycling information, contact: www.mygreenelectronics.com or www.eiae.org.



END OF LIFE DIRECTIVES - RECYCLING

Your new TV/Monitor contains several materials that can be recycled for new uses.

Like all LCD products, this set contains a lamp with Mercury, please dispose of according to all local State and Federal laws.